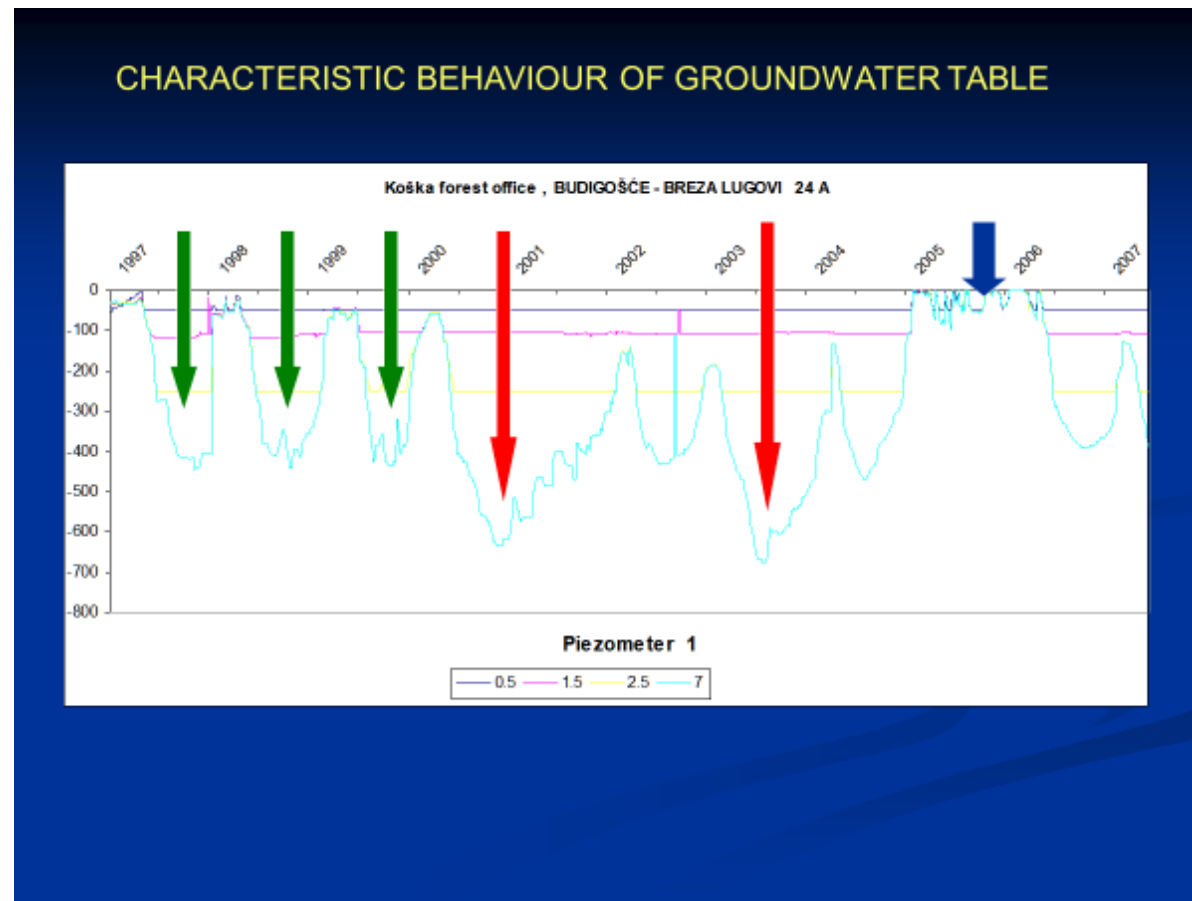
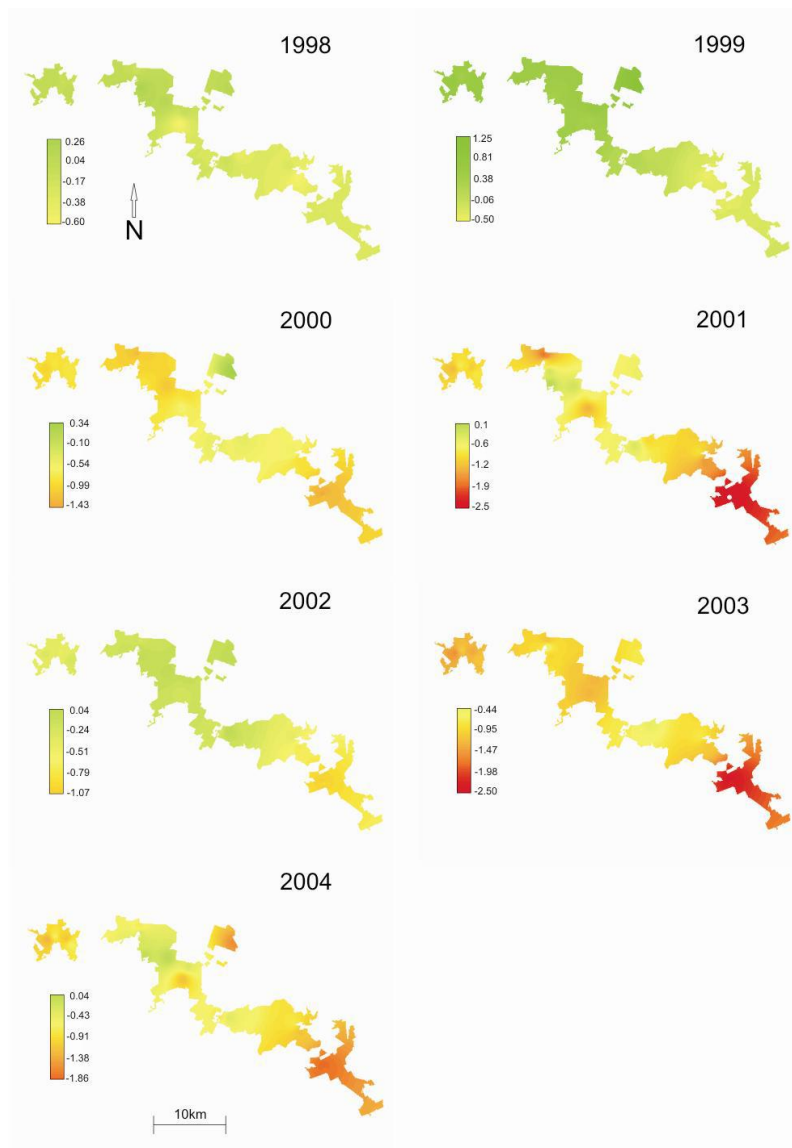


# Prekogranični sustav monitoringa podzemnih voda i WEB GIS

Ivan Pilaš

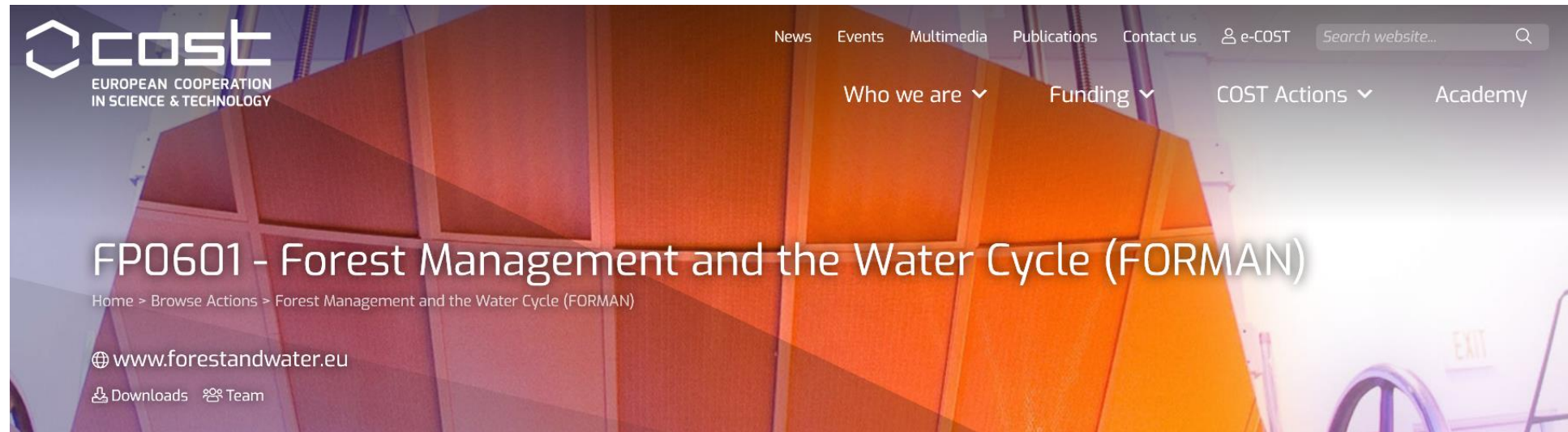
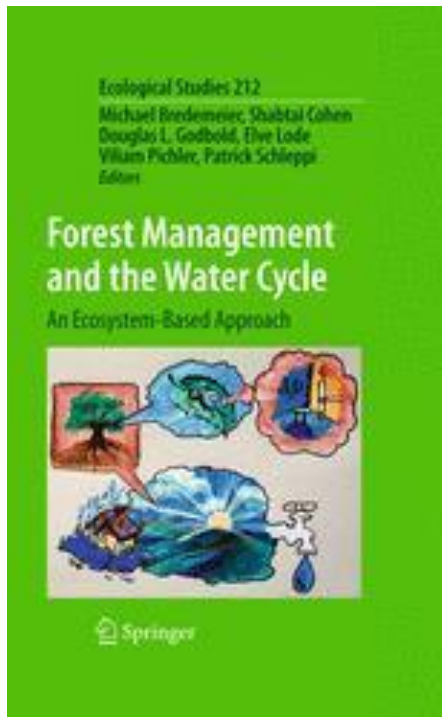
Hrvatski šumarski institut, Jastrebarsko

**Motiv projekta** – Klimatske promjene u Slavoniji i Baranji, naglo sniženje podzemnih voda nakon ekstremno vrućih i suhih godina 2000 i 2003, ekstremno visoki vodostaji 2005. i 2006., opći trend opadanja vodostaja (Prvi put opažano na podacima piezometara UŠP Našice)



Opažanja prezentirana na IUFRO konferenciji u Pekingu, 2007. god.:

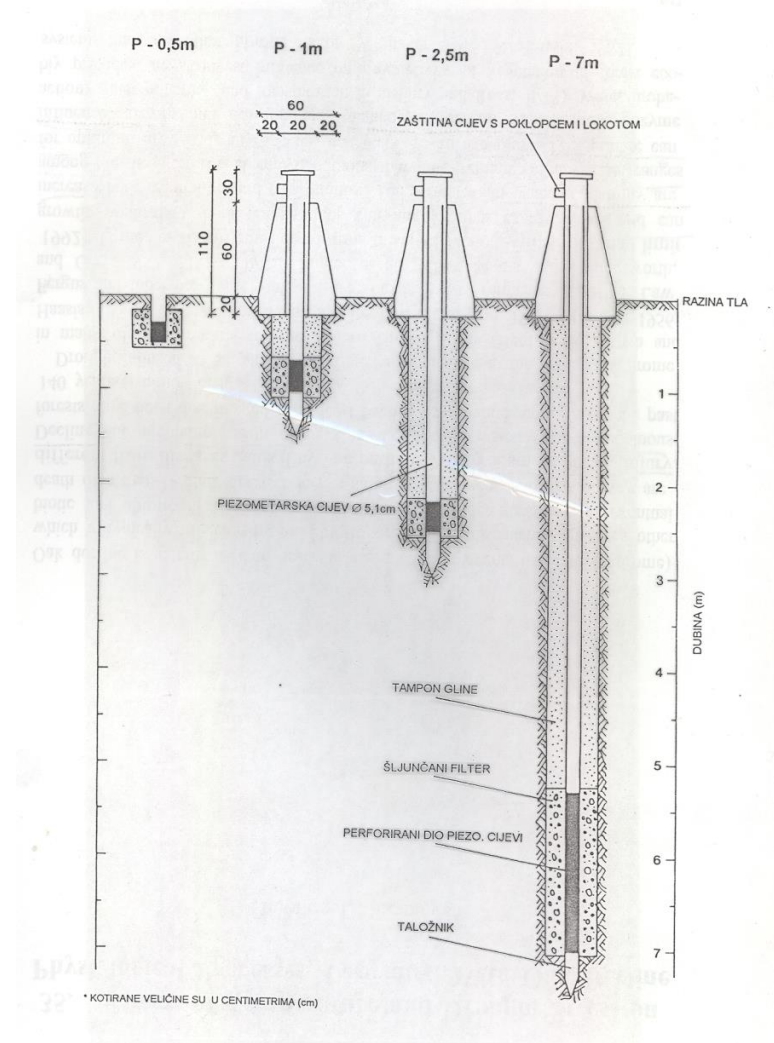
- International forest eco-hydrological Workshop on Water Management through Forest Management CAF (Chinese Academy of Forestry), Beijing - IUFRO Division 8.01.04 – Water supply and quality and jointly organized by CAF and the Forest Ecosystems Research Center of Goettingen University, Germany. Pilaš. I. TRENDS AND SEASONALITY OF GROUNDWATER TABLES IN LOWLAND HARDWOOD FORESTS IN CROATIA



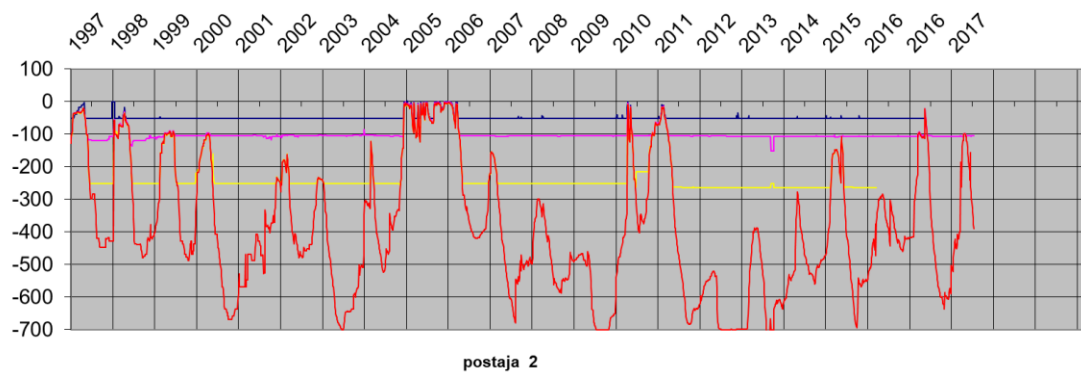
# „Stari“ sustav praćenja podzemnih voda (fućka, vrpca i motritelj, dva puta na tjedan)



SKICA BATERIJE PIEZOMETARA NA JEDNOJ VODOMJERNOJ LOKACIJI (STACIONARU) U NIZINSKIM ŠUMAMA U.Š. NAŠICE (1994)



Šumarija Koška, BUDIGOŠĆE - BREZA LUGOVI 16 A



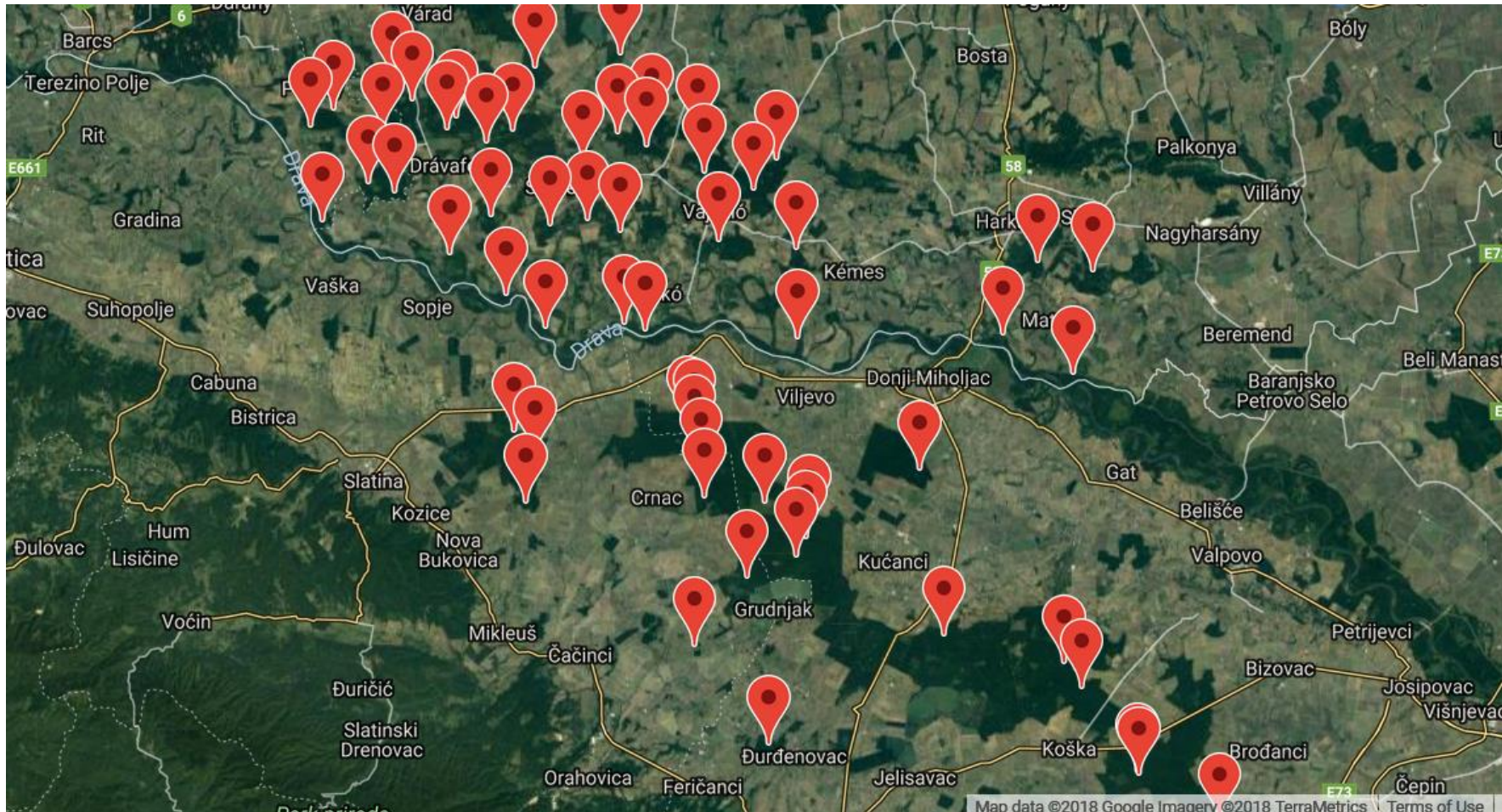


## Ideja i preduvjeti za novi sustav praćenja – „Oak protection” Uprava šuma Podružnica Našice i Mecsekerdő Zrt. Pécs

- automatizirani sustav praćenja, smanjenje terenskih obilazaka (redukcija troškova), povećanje pouzdanosti i višegodišnja održivost sustava
- dinamični prikaz podataka tijekom sezone (upozorenje na sušu i pojačano sušenje šuma...), nadopuna s klimatskim podacima s meteo postaja
- priprema za uspostavu aktivnih vodno-retencijskih adaptivnih mjera za umanjenje učinka klimatskih promjena

# Ostvareni ciljevi INTERREG Oak protection projekta:

I) Uspostava prekograničnog automatiziranog sustava praćenja podzemnih voda  
(Uspostavljeno 60 postaja, 38 u Mađarskoj, 22 u Hrvatskoj)







**Eijkelkamp**  
Soil & Water



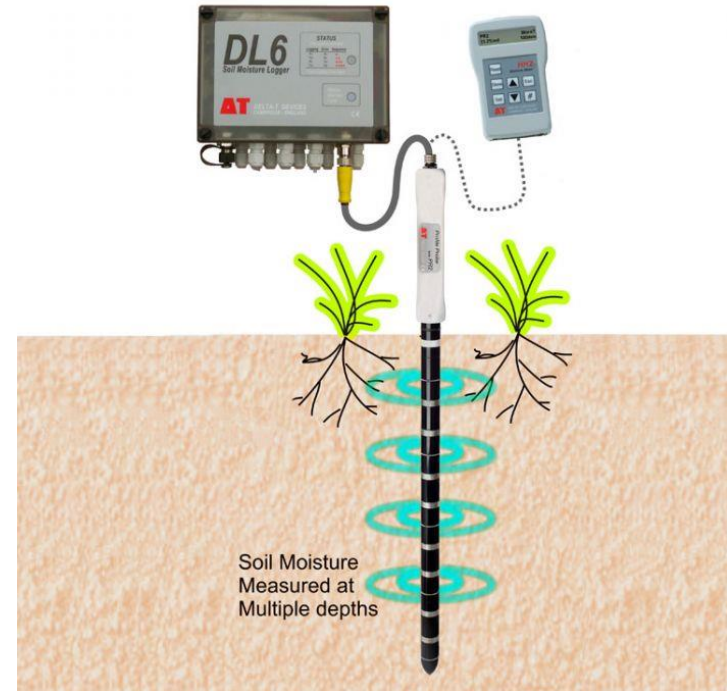


## II) Uspostava 5 automatskih meteo postaja u Hrvatskoj, 2 u Mađarskoj



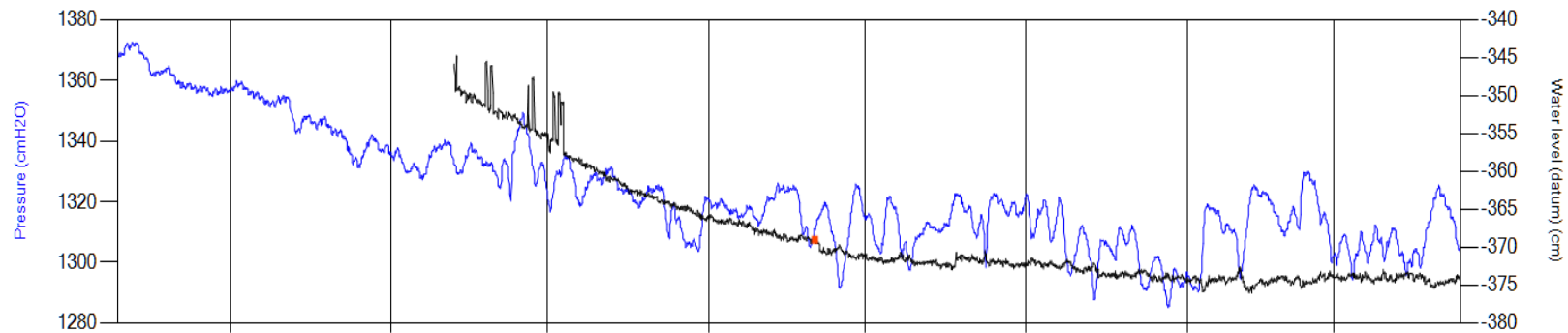


### III) Uređaj za analizu kvalitete vode na terenu i sonda za praćenje vlažnosti tla

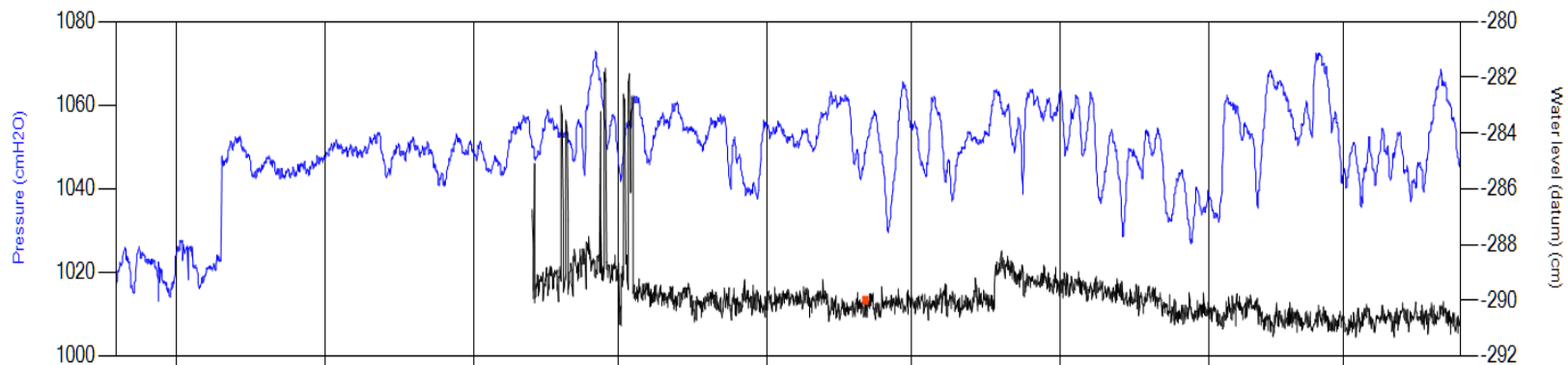


# Prvi rezultati automatiziranog sustava praćenja podzemnih voda !!!

NASICE 1 - AJ988 - [10.7.2018. 12:00:00 - 25.3.2019. 10:00:00]



NASICE 11 - AK033 - [18.6.2018. 12:00:00 - 25.3.2019. 8:00:00]



# WEB – GIS „Oak Protection” <https://oak.geof.hr/gis>

The screenshot displays a web browser window with the following elements:

- Browser Tab:** SquirrelMail 1.4.23 [SVN] | Oak protection
- Address Bar:** <https://oak.geof.hr/gis>
- Navigation Menu (Left):**
  - Base (selected)
  - Overlays
  - Legend
  - Filter
- Map Content:** A map of a region in Croatia, showing towns like Velika Kaniža, Kutas, Koprivnica, and Subotica. The map includes a scale bar at the bottom right indicating 20 km.
- Taskbar (Bottom):** Windows taskbar with the time 22:44 and date 6.6.2019.



Base Overlays Legend Filter

Navigation Data Measurements Other

Search Search ivanp

- Display base in greyscale
- PUBLIC
- OSM
- Google Maps
- Google Terrain
- Google Satellite
- OFFICIAL
- Orthophoto Croatia
- True colour image 2012
- OTHER
- Basic base layer
- Empty - white
- Empty - dark
- World map



Magyarország-Horvátország  
Háttér: Anyóvilág Egyezményes Program

Interreg

MECSEKERÜ  
teremtésük után

HRVÁTSKE  
ŠUME

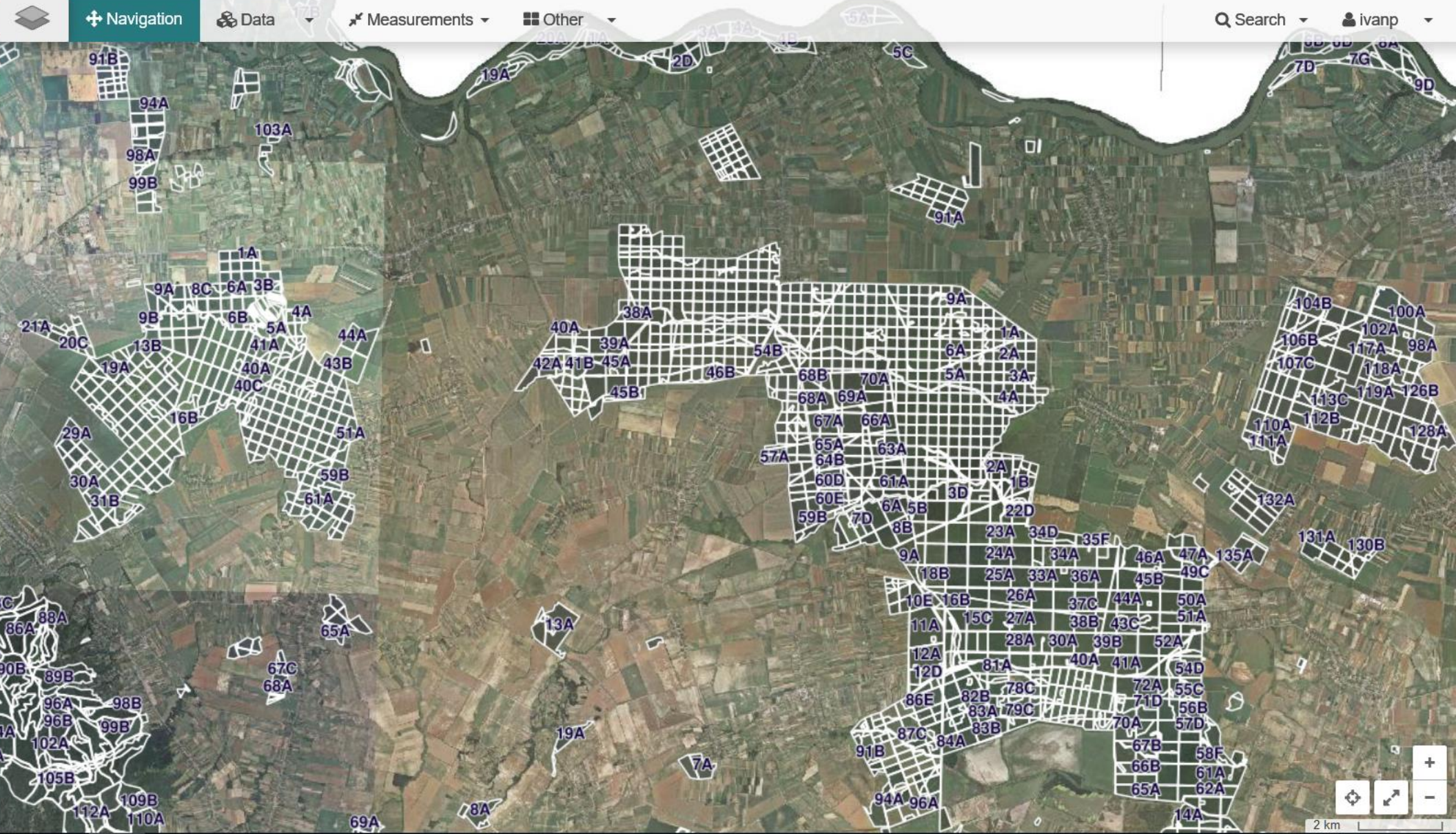
5 km

Map navigation controls: Home, Full Screen, Zoom In (+), Zoom Out (-)



Base Overlays Legend Filter

- Display base in greyscale
- PUBLIC
- OSM
- Google Maps
- Google Terrain
- Google Satellite
- OFFICIAL
- Orthophoto Croatia
- True colour image 2012
- OTHER
- Basic base layer
- Empty - white
- Empty - dark
- World map





- Display base in greyscale
- PUBLIC
- OSM
- Google Maps
- Google Terrain
- Google Satellite
- OFFICIAL
- Orthophoto Croatia
- True colour image 2012
- OTHER
- Basic base layer
- Empty - white
- Empty - dark
- World map

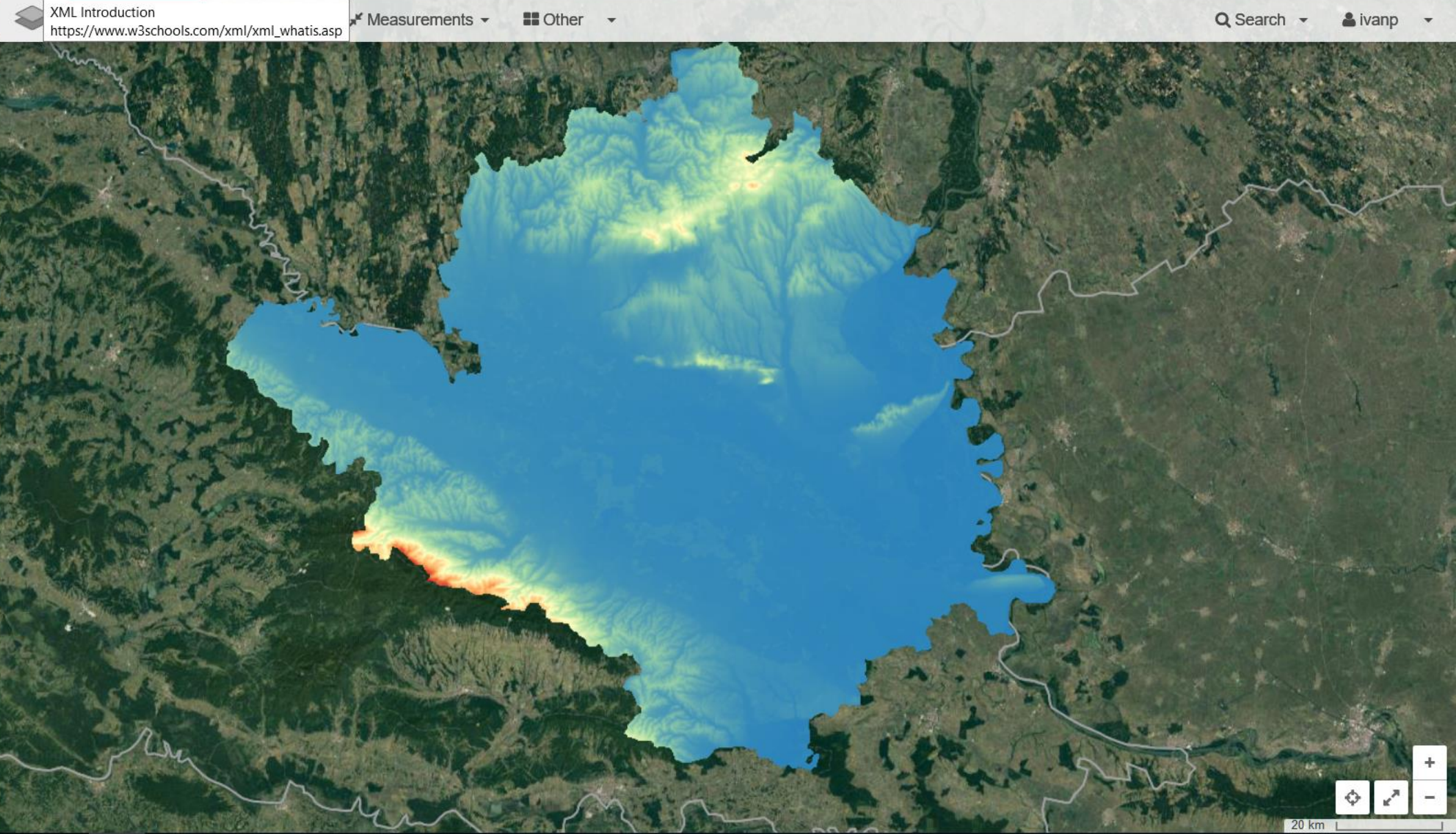




- Copernicus S2 - indices
- Copernicus LMS
  - Tree Cover Density 2015
  - Forest Type 2015
  - Water & Wetness 2015
  - ESM 2012-Release 2017
  - EU-DEM v1.1**
  - Riparian zones A
  - Riparian zones O
  - Riparian zones P

Croatia

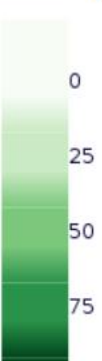

  
[https://www.w3schools.com/xml/xml\\_what\\_is.asp](https://www.w3schools.com/xml/xml_what_is.asp)





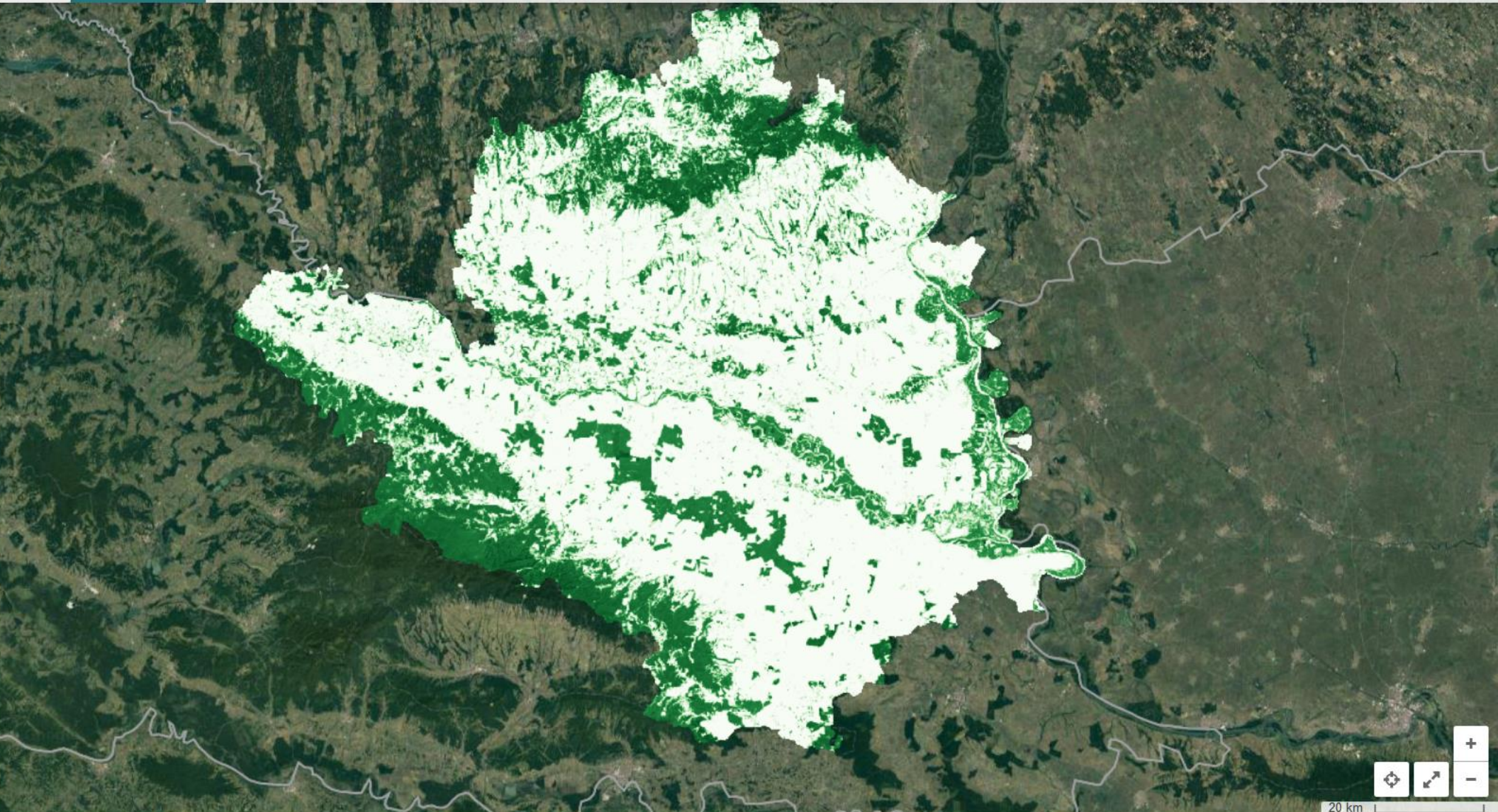
MAP LEGEND

Tree Cover Density 2015



0  
25  
50  
75

Magyarország-Horvátország  
Natura 2000 Egyezmény keretében  
Interreg  
MECSEKERÜLŐ  
HRVÁTSKE  
ŠUME



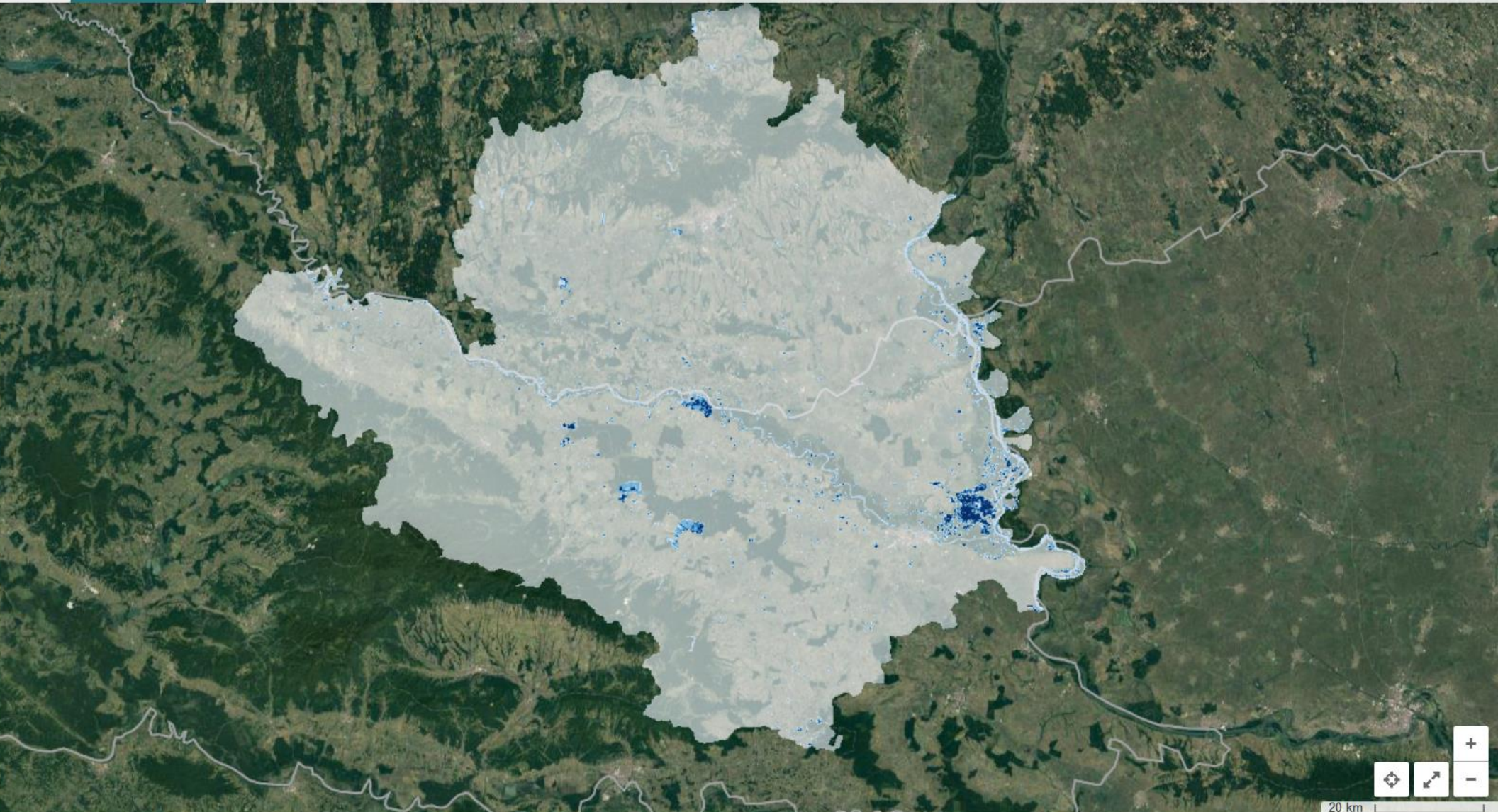


MAP LEGEND

**Water & Wetness 2015**

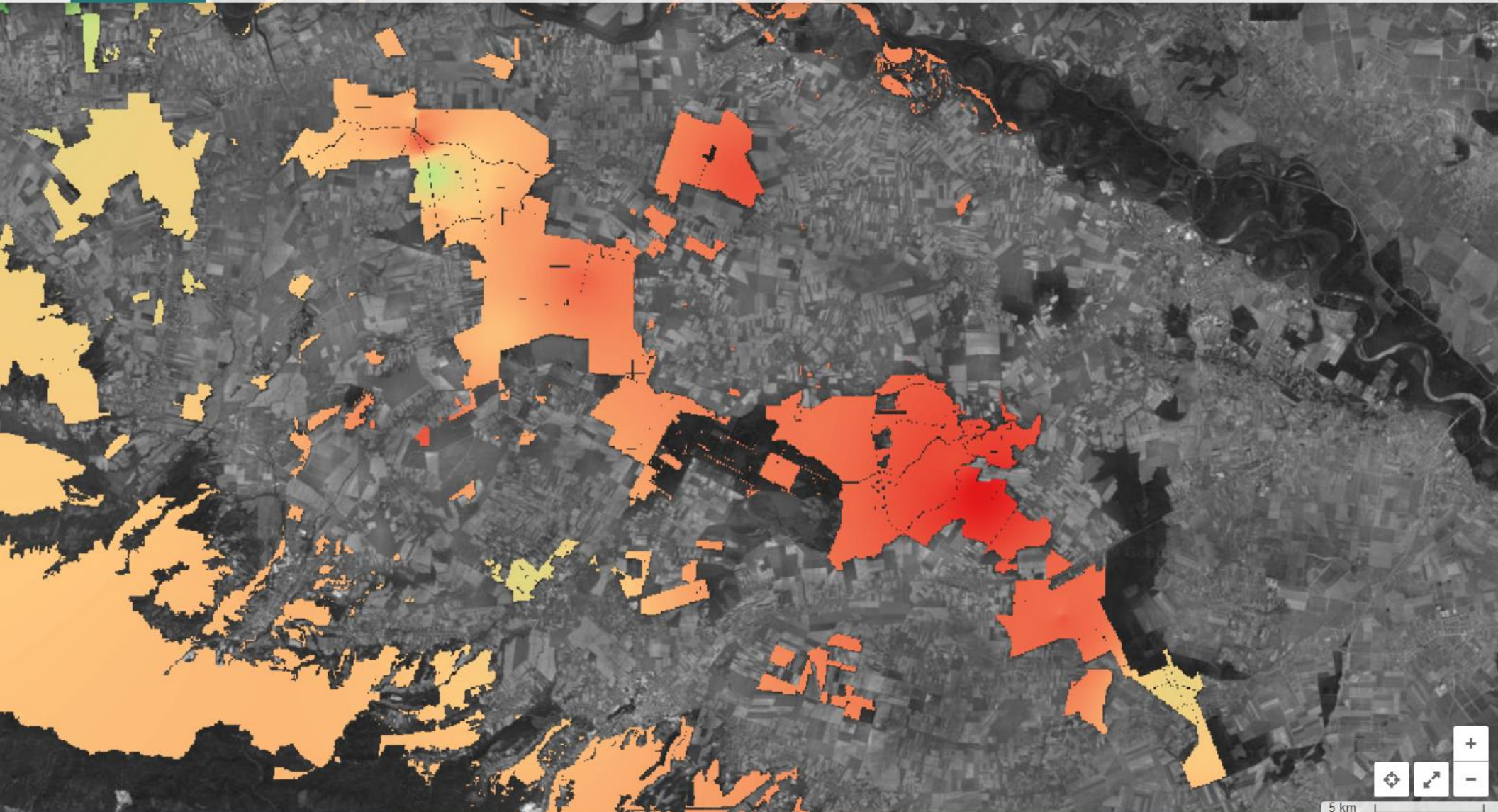
- No water/no wet area
- Permanent water
- Temporary water
- Permanently wet area (wetness)

Magyarország-Horvátország  
Natura 2000 Egyezmény keretében  
Interreg  
MECSEKERÜLŐ  
HRVÁTSKE  
ŠUME

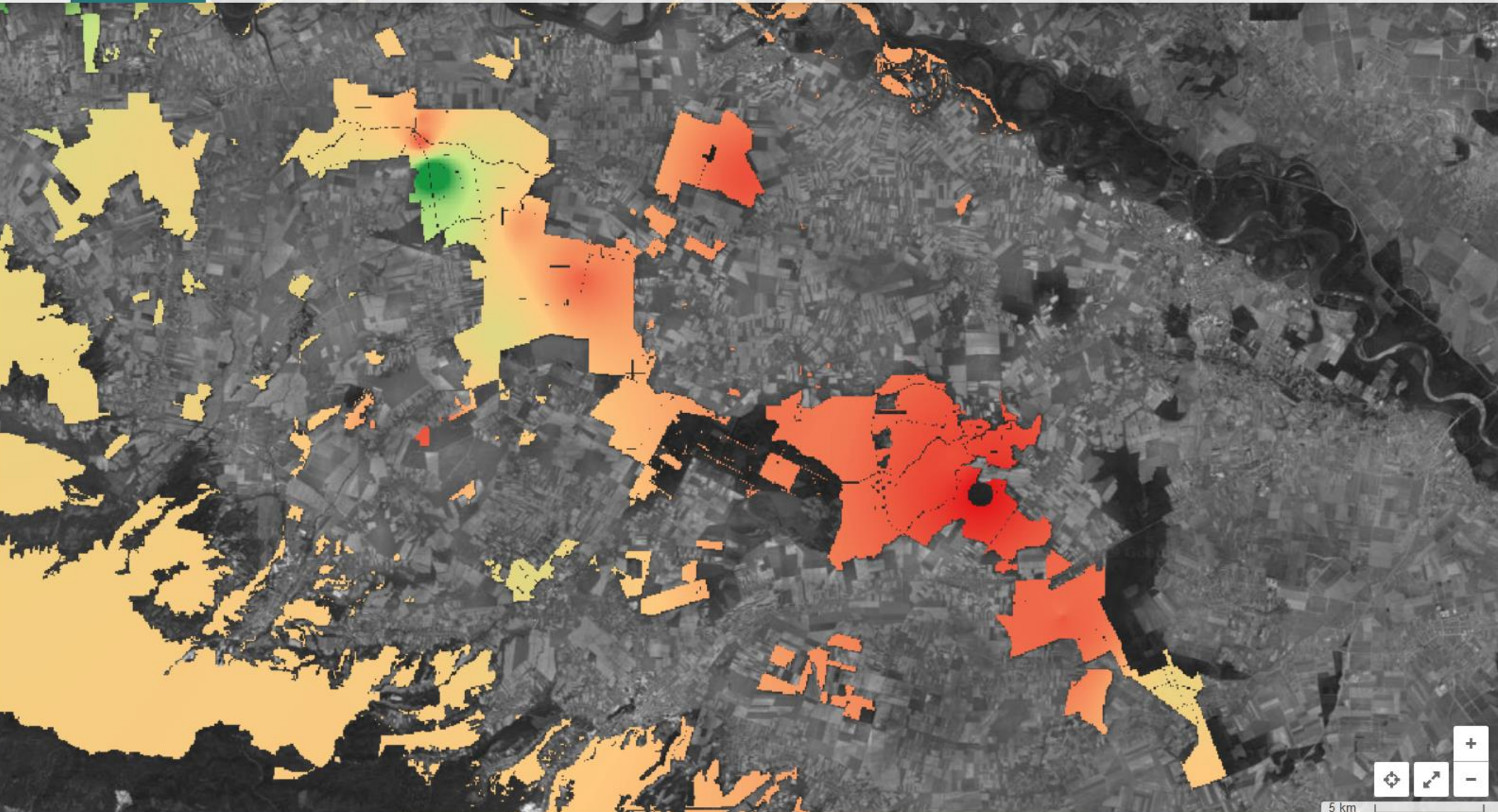




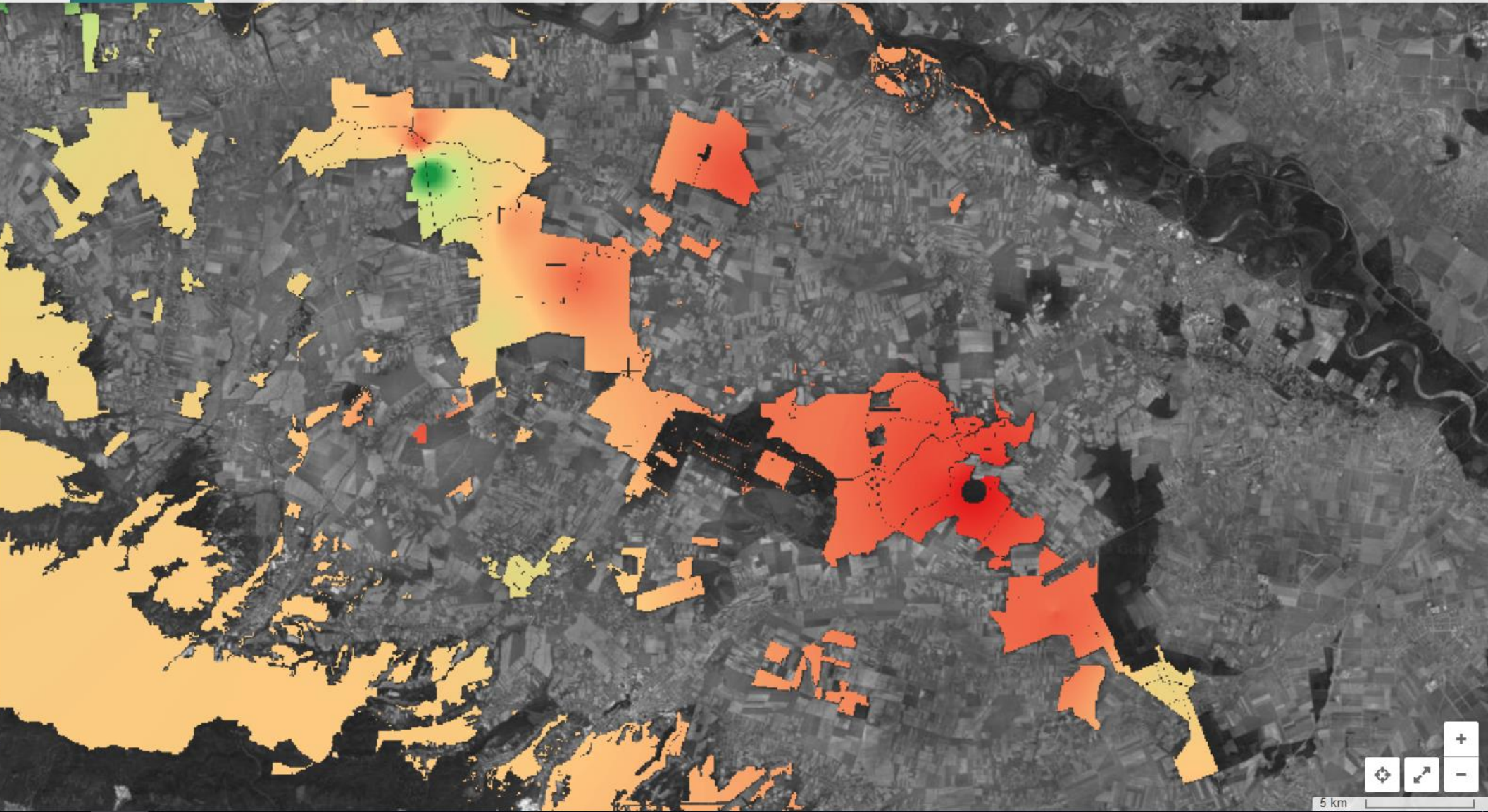
- Croatia
  - Forest stand border
  - Subcompartment border
  - Hydrology-groundwater
  - Monthly average layers
    - Water AVG (2.5m) Jan
    - Water AVG (10m) Jan
    - Water AVG (2.5m) Feb
    - Water AVG (10m) Feb
    - Water AVG (2.5m) Mar
    - Water AVG (10m) Mar

















OVERLAY LAYERS

✕ Clear all

Croatia

- Forest stand border
- Subcompartment border
- Hydrology-groundwater
- Monthly average layers
  - Water AVG (2.5m) Jan
  - Water AVG (10m) Jan
  - Water AVG (2.5m) Feb
  - Water AVG (10m) Feb
  - Water AVG (2.5m) Mar
  - Water AVG (10m) Mar



Magyarország-Horvátország  
Natura 2000 Egyezmény keretében

Interreg

MECSEKERÜLŐ  
teremtés és élet

HRVÁTSKE  
ŠUME





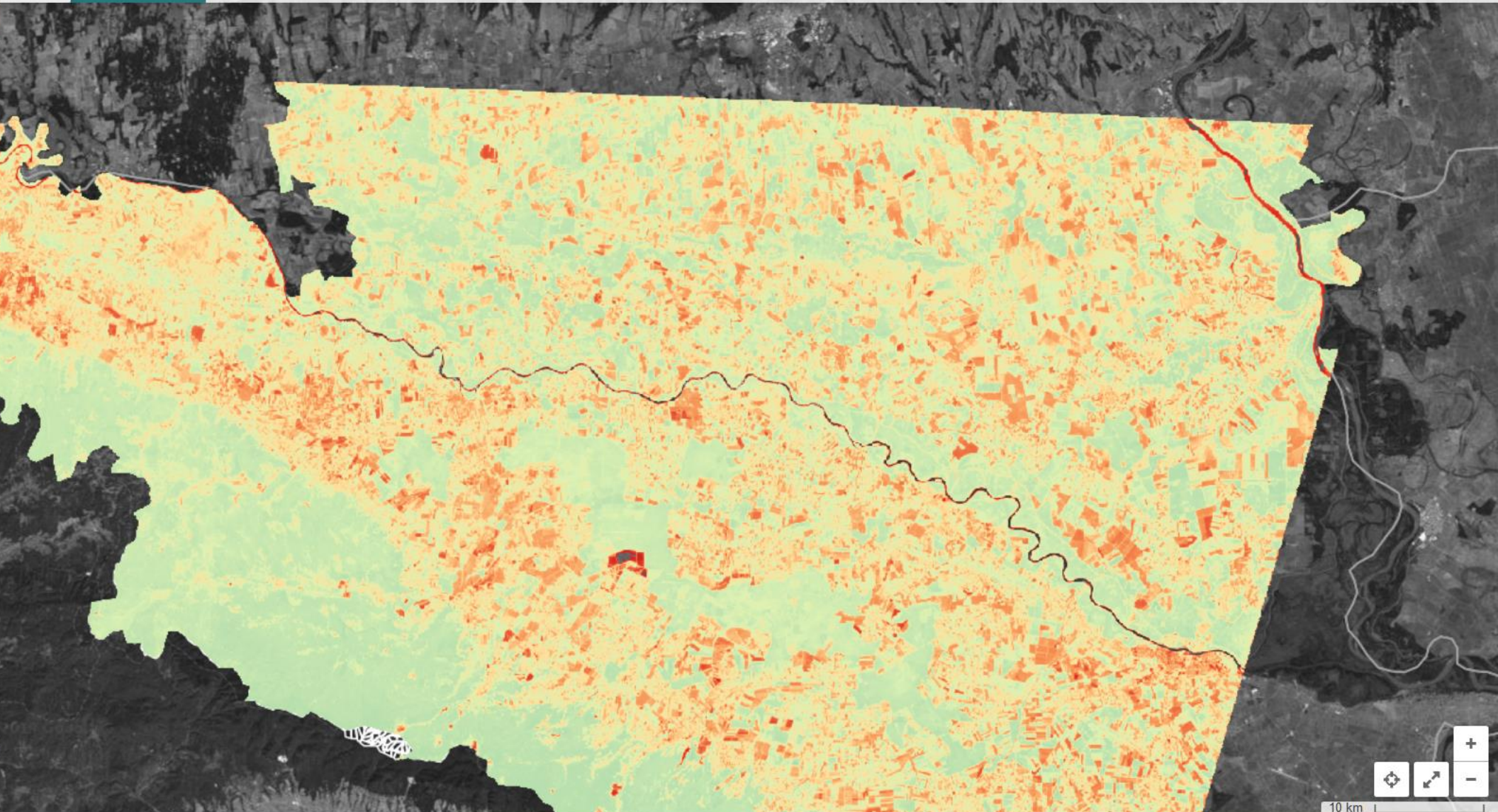


OVERLAY LAYERS

Clear all

Copernicus S2 - indices

- NDVI 2018
  - 2018-03-11
  - 2016-08-28
  - 2018-06-12
  - 2018-09-30
- NDVI 2017
- NDVI 2016
- NDWI 2018
- NDWI 2017
- NDWI 2016





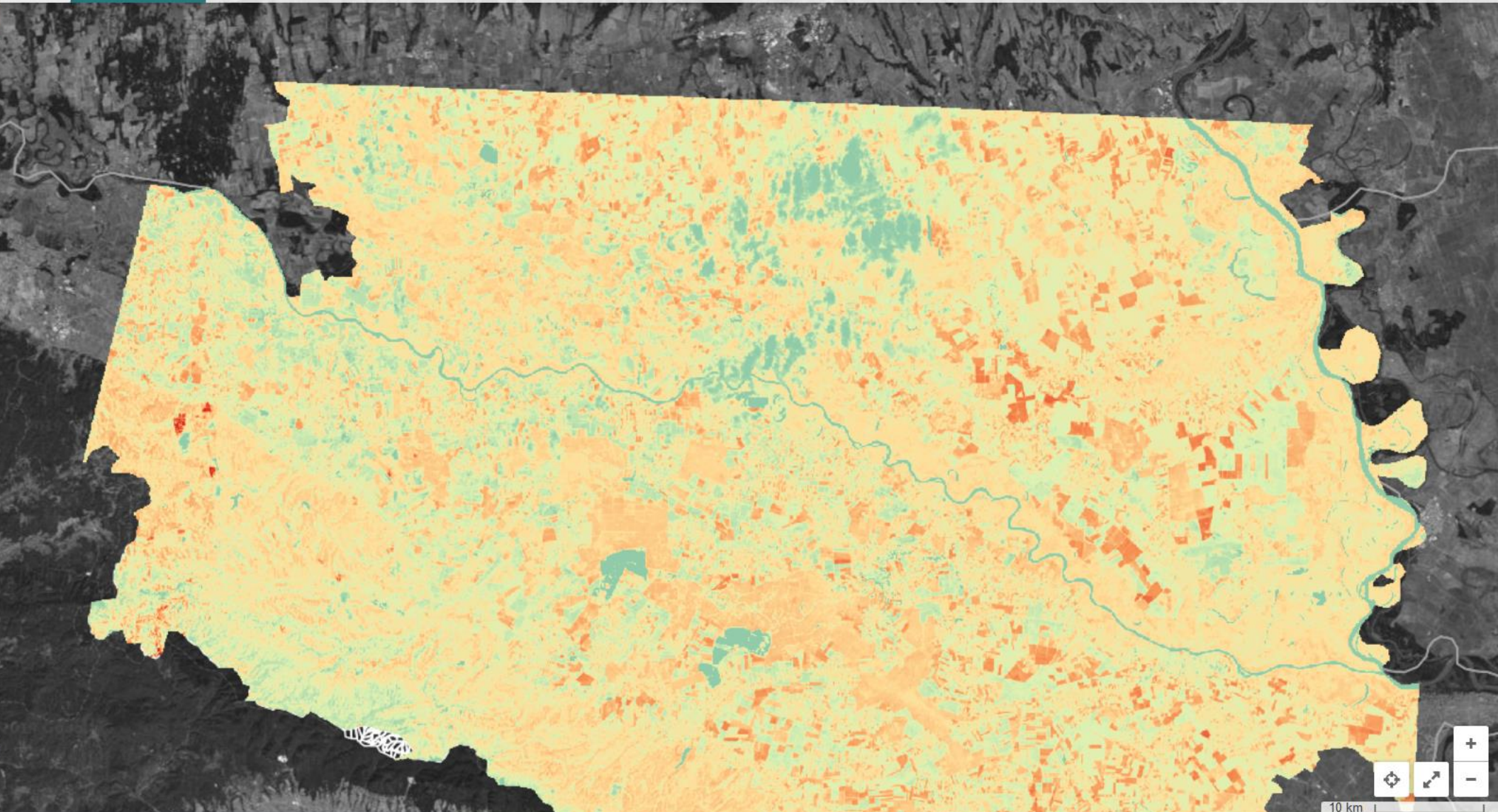
OVERLAY LAYERS

Clear all

Copernicus S2 - indices

- NDVI 2018
- NDVI 2017
- NDVI 2016
- NDWI 2018
  - 2018-03-11
  - 2016-08-28
  - 2018-06-12
  - 2018-09-30
- NDWI 2017
- NDWI 2016

Magyarország-Horvátország  
Natura 2000 Egyezmény keretében  
Interreg  
MECSEKERÜLŐ  
HRVÁTSKE  
ŠUME





OVERLAY LAYERS

Clear all

Copernicus S2 - indices

- NDVI 2018
- NDVI 2017
- NDVI 2016
- NDWI 2018
  - 2018-03-11
  - 2016-08-28
  - 2016-08-28 ZUTO-UU-12
  - 2018-09-30
- NDWI 2017
- NDWI 2016

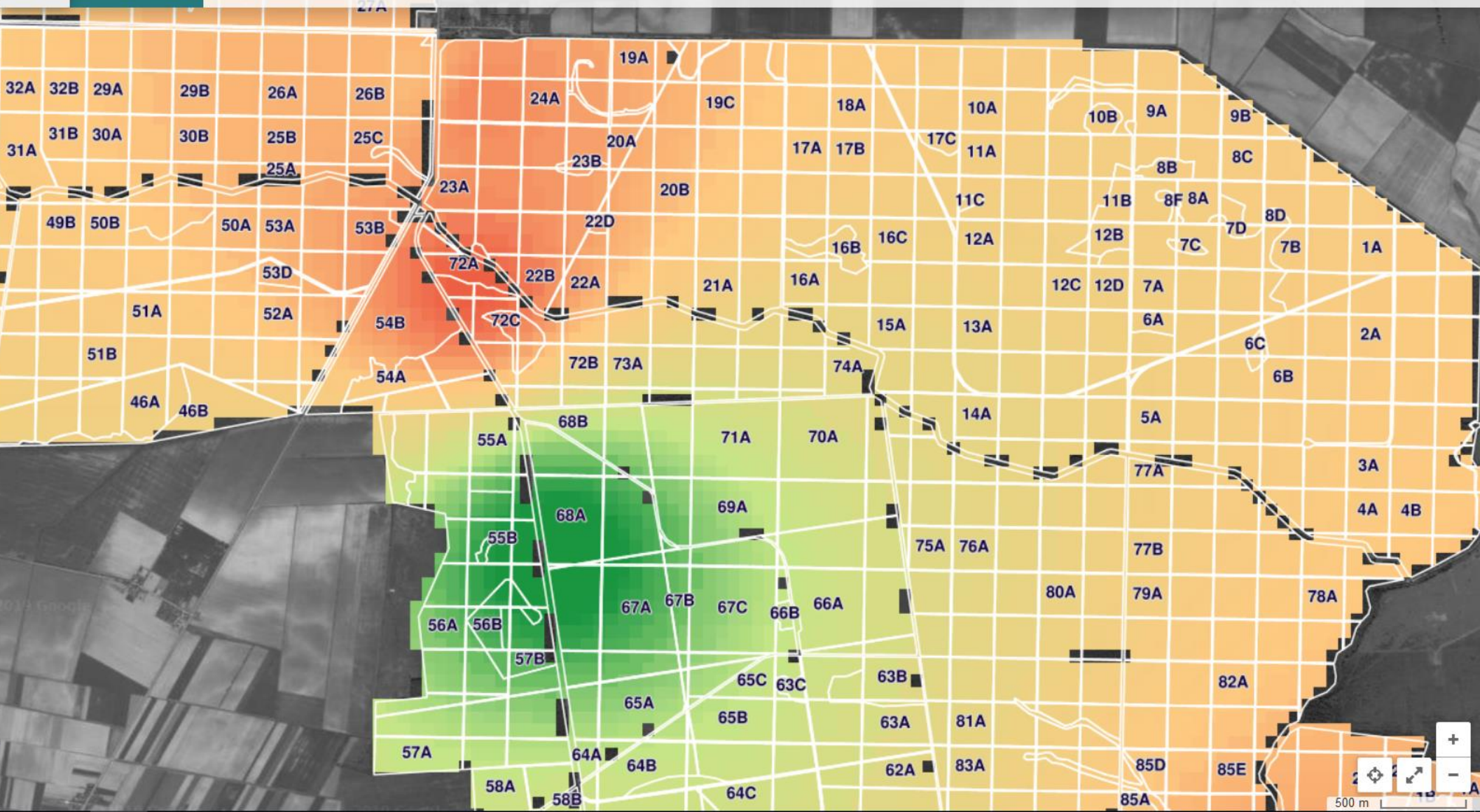
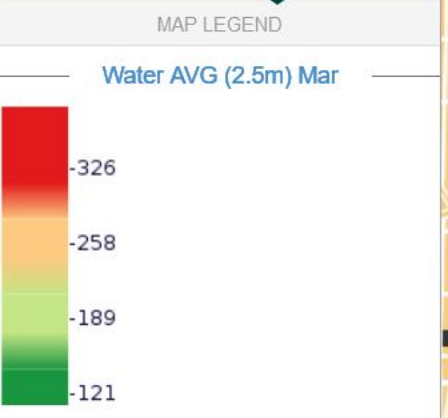
Magyarország-Horvátország  
Natura 2000 Egyezmény keretében  
Interreg  
MECSEKERI  
HRVATSKE  
ŠUME





Base Overlays Legend Filter

Navigation Data Measurements Other



Magyarország-Horvátország  
Helyzet: Állandó Egyezményes Program

Interreg

MECSEKERÜLŐ  
teremtésük után

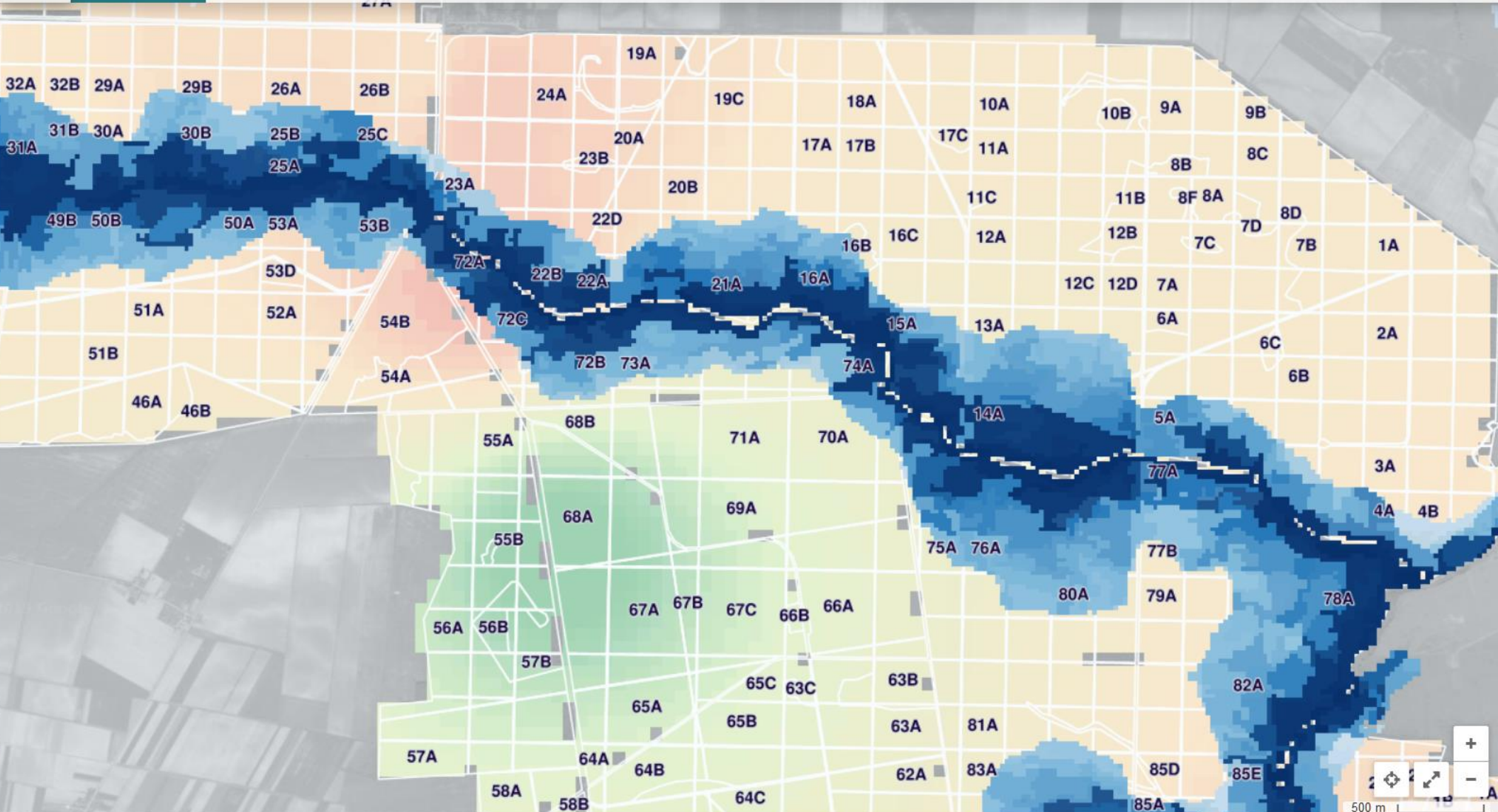
HRVÁTSKE  
SÚME



OVERLAY LAYERS

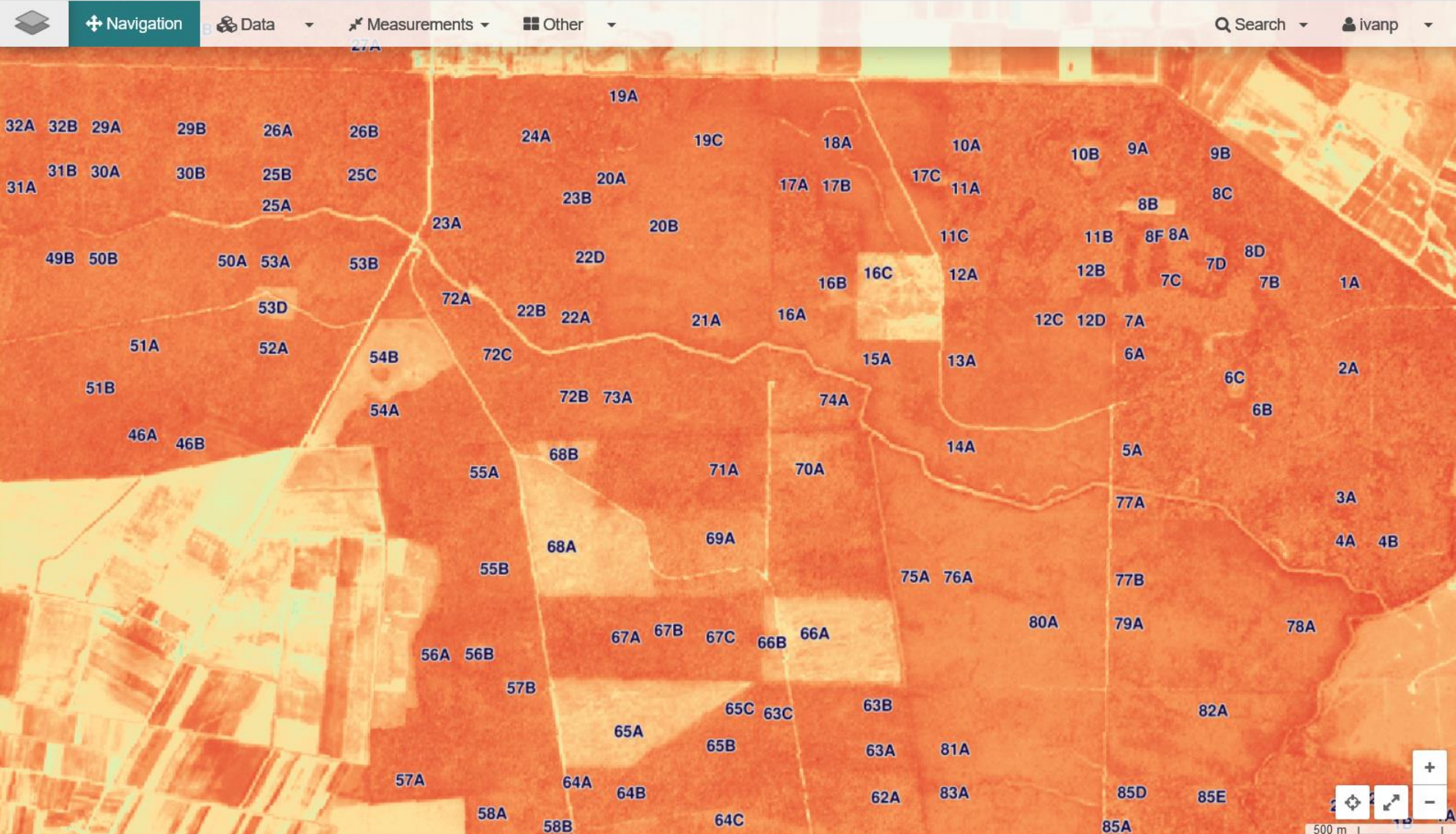
Clear all

- Copernicus S2 - indices
- Copernicus LMS
  - Tree Cover Density 2015
  - Forest Type 2015
  - Water & Wetness 2015
  - ESM 2012-Release 2017
  - EU-DEM v1.1
  - Riparian zones A**
  - Riparian zones O
  - Riparian zones P
- Croatia



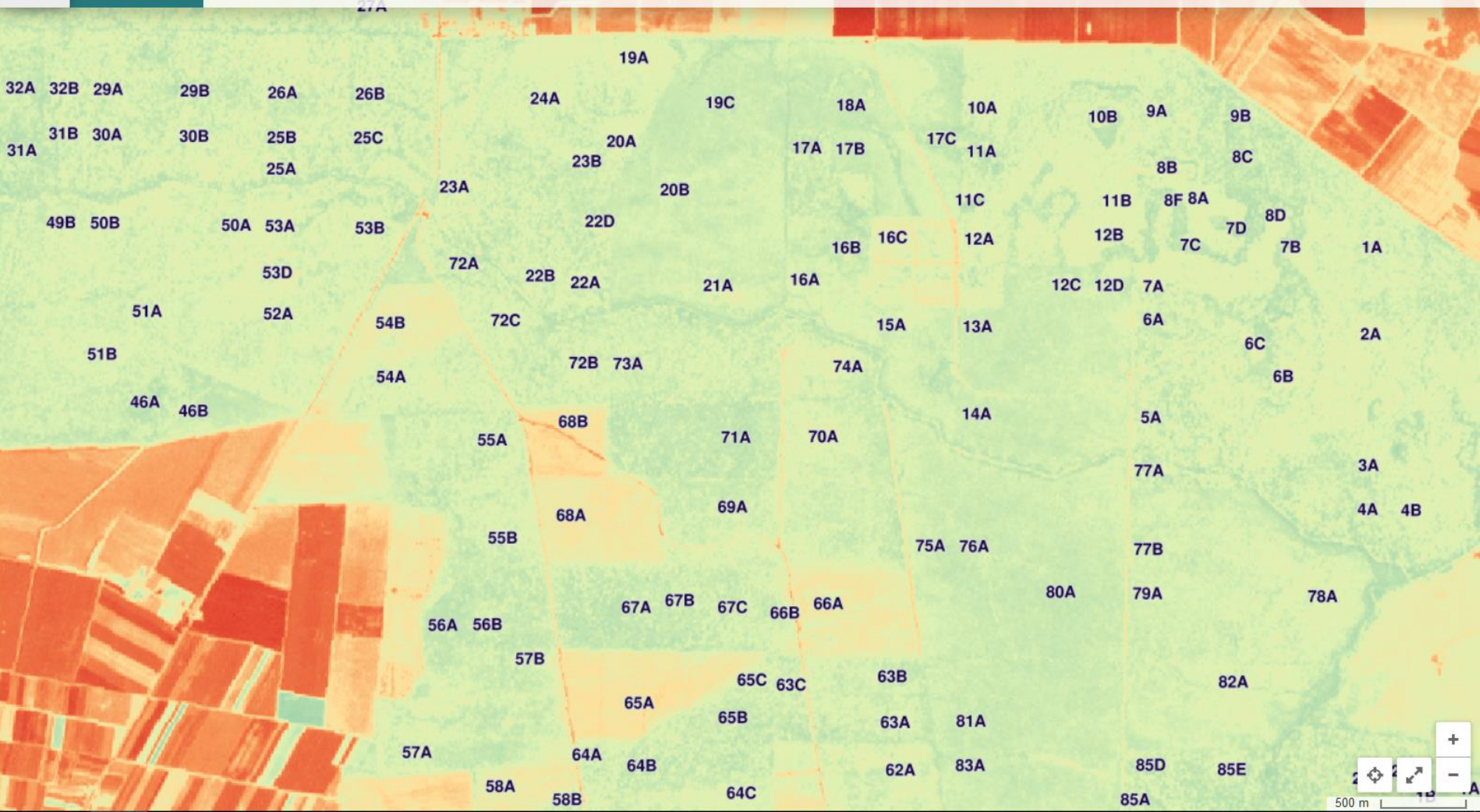
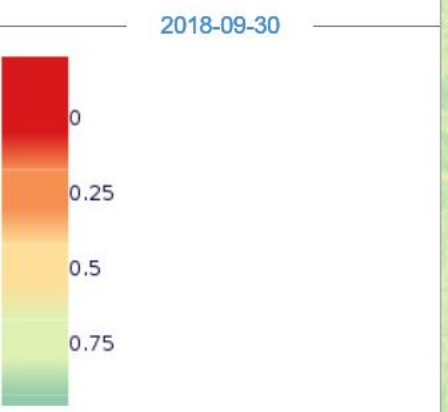


- Clear all
- ESM 2012-Release 2017
- EU-DEM v1.1
- Riparian zones A
- Riparian zones O
- Riparian zones P
- Croatia
  - Forest stand border
  - Subcompartment border
  - Hydrology-groundwater
  - Monthly average layers
    - Water AVG (2.5m) Jan





MAP LEGEND





OVERLAY LAYERS

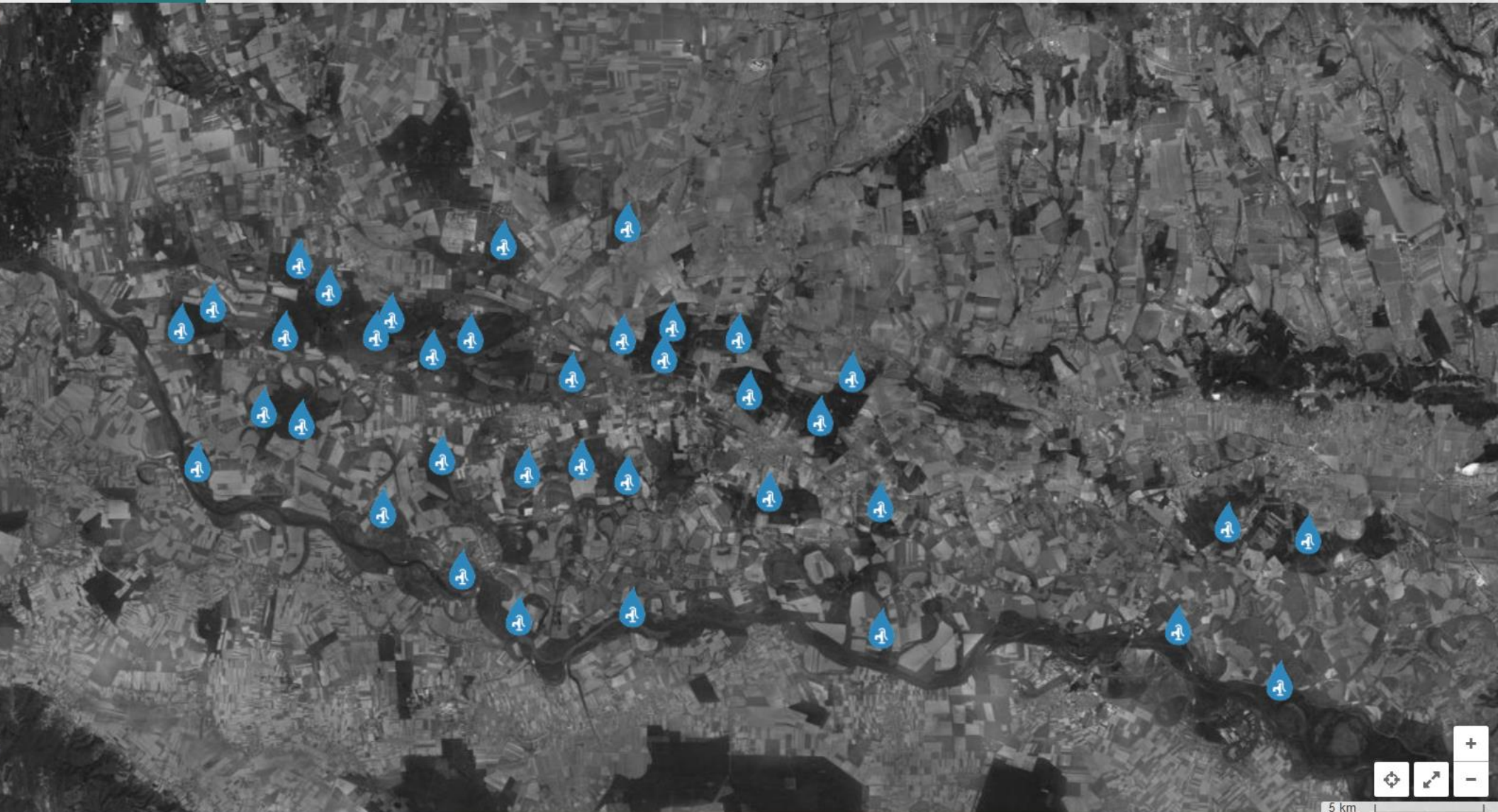
Clear all

- ESM 2012-Release 2017
- EU-DEM v1.1
- Riparian zones A
- Riparian zones O
- Riparian zones P

Croatia

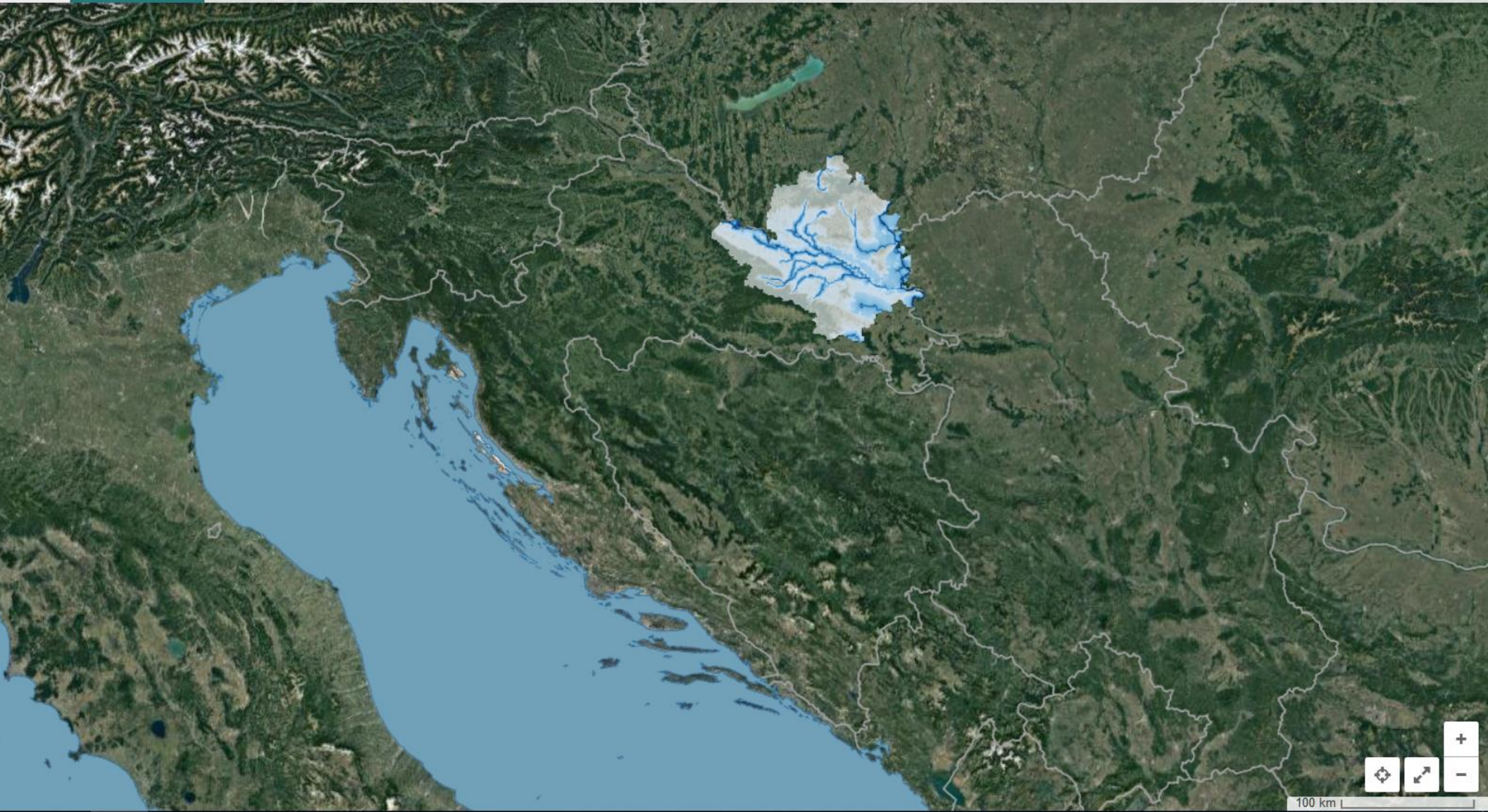
- Forest stand border
  - Subcompartment border
- Hydrology-groundwater
- Monthly average layers
  - Water AVG (2.5m) Jan
  - Water AVG (10m) Jan

Magyarország-Horvátország  
Natura 2000 Egyezmény keretében  
Interreg Hrvatske Šume  
MECSEKERÜ  
Hrvatske Šume





- Display base in greyscale
- PUBLIC
- OSM
- Google Maps
- Google Terrain
- Google Satellite
- OFFICIAL
- Orthophoto Croatia
- True colour image 2012
- OTHER
- Basic base layer
- Empty - white
- Empty - dark
- World map





Hvala na pažnji!